

WE BELIEVE MADERA UNIFIED

District Overview 2018 - 2019

27

schools

20,017

students

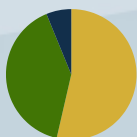
| | |
|----------------------|----|
| Elementary School | 18 |
| Middle School | 3 |
| High School | 4 |
| Community Day School | 1 |
| Adult School | 1 |

2,016

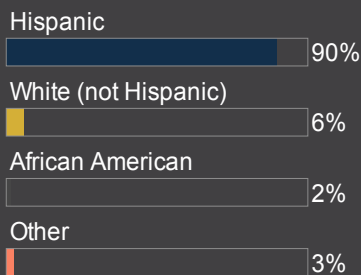
employees



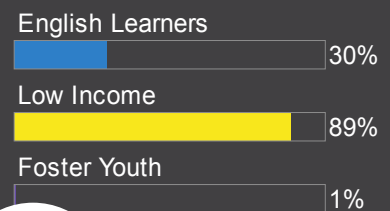
- Certificated Teachers (53.60%)
- Classified Employees (40.20%)
- Management Employees (6.20%)



Student Diversity



Subgroups



\$270MM
budget



Stakeholder Engagement



Stakeholders Include: parents, students, community members, board trustees, district staff, DELAC, PAC, MUTA, CSEA



Communication to stakeholders included: Direct phone calls, flyers, local newspaper, Madera Unified School District website.

4 Pillars

Pillar I

Equitable Access to Rigorous High Level Programs

- Basic Services
- Implementation of State Standards
- Student Achievement
- Course Access
- Other Student Outcomes

Pillar II

Data Driven Professional Learning & Collaboration

- Basic Services
- Implementation of State Standards
- Student Achievement
- Student Engagement
- Course Access
- Other Student Outcomes

Pillar III

Safe & Healthy Environment for Learning & Work

- Basic Services
- Course Access
- Student Achievement
- Student Engagement
- School Climate
- Parent Involvement
- Other Student Outcomes

Pillar IV

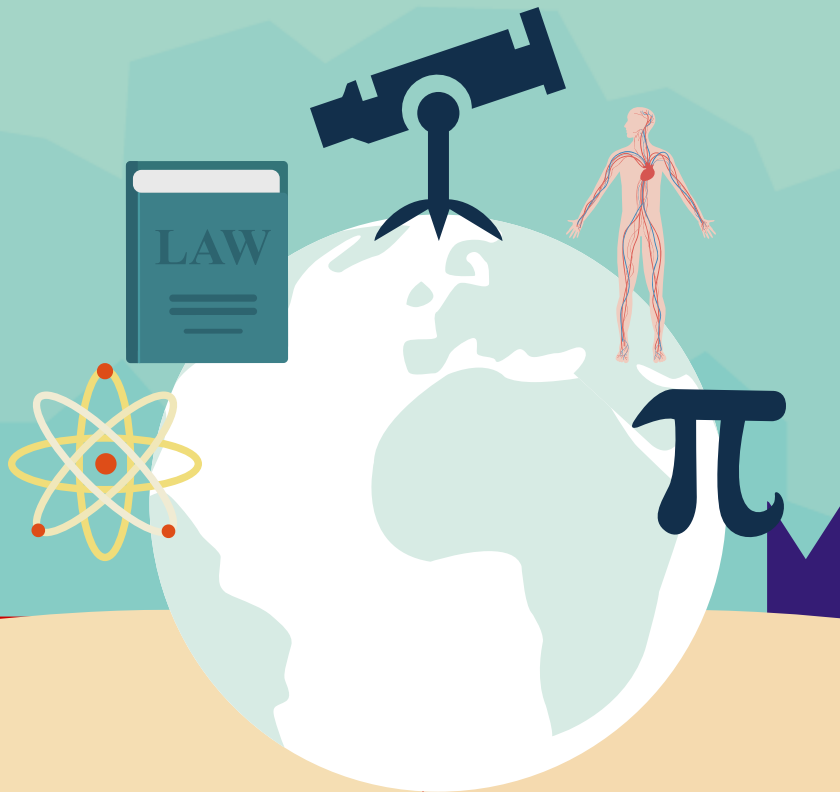
Strong Relationships with Families & Community

- Course Access
- Student Achievement
- Student Engagement
- Parent Involvement
- School Climate



Goal 1 Summary

Equitable Access to Rigorous
High Level Programs



- Implementation of College and Career Readiness Initiatives
- Upgrade and Modernization of Technology
- Continue Expansion and Improvements to Arts, Music and Athletic Programs
- Implementation of Early Learning Intervention
- Maintain and Increase Extended Opportunities for Students
- Implementation of Site Specific Intervention Budget

- Support all English learners in attaining English language proficiency and mastery of the Core Content Standards
- Maintain and Expand Educational Services to Special Education Students
- Continue Reducing the Average Class Size



Goal 2 Summary

Data Driven Professional Learning and Collaboration



- Continue Professional Development Related to Implementation of State Standard in ELA/ELD, Mathematics and Science
- Implementation of Professional Development for Classified Staff

- Increase Time for Site and District Staff to Collaborate in Professional Learning Communities (PLC)
- Implementation of New Madera Unified Accountability System





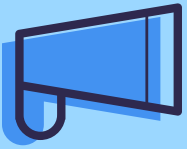
Goal 3 Summary

Safe and Healthy Environments for Learning and Work

- Maintain Grade Level Field Trips for K-6
- Maintain District Supports and Operations
- Continue Improving the Quality and Nutritional Food Offerings to Students District-wide
- Maintain School Site Supply Budget
- Implementation of Replacement Schedule for Facilities, Equipment, Technology and Other Needs
- Implementation of Professional Development Related to Improving School Safety and Climate
- Continue to Recruit and Retain Highly Qualified Teachers and Support Staff



Goal Summary



Goal 4 Summary

Strong Relationships with Families and Community

- Continue to Maintain and Expand Parent Resource Centers
- Maintain and Expand Supports for Foster, Homeless, Migrant, Teen Parents and Other Unique Student Population Groups
- Maintain and Expand Adult Education Program
- Continue Partnering with Community-based Organizations to Help Develop Parent Leadership in LCAP Engagement and Annual Budget Process
- Maintain and Update LCAP Dashboard
- Maintain and Expand Interpretation and Translation Services
- Establish and Maintain Purposeful Communication and Marketing Strategies within the School District and Local Community

